



1/38 Strickland Street South Perth, WA



2



1



2

Sold with Multiple Offers!

Contact Bill McKenzie with any enquiries.

Council Rates: \$2,071.88/year (approx)

Water Rates: \$1,011.41/year (approx)

Strata Rates: \$820.00 p/q

Bill McKenzie

0412800661

1/38 Strickland St

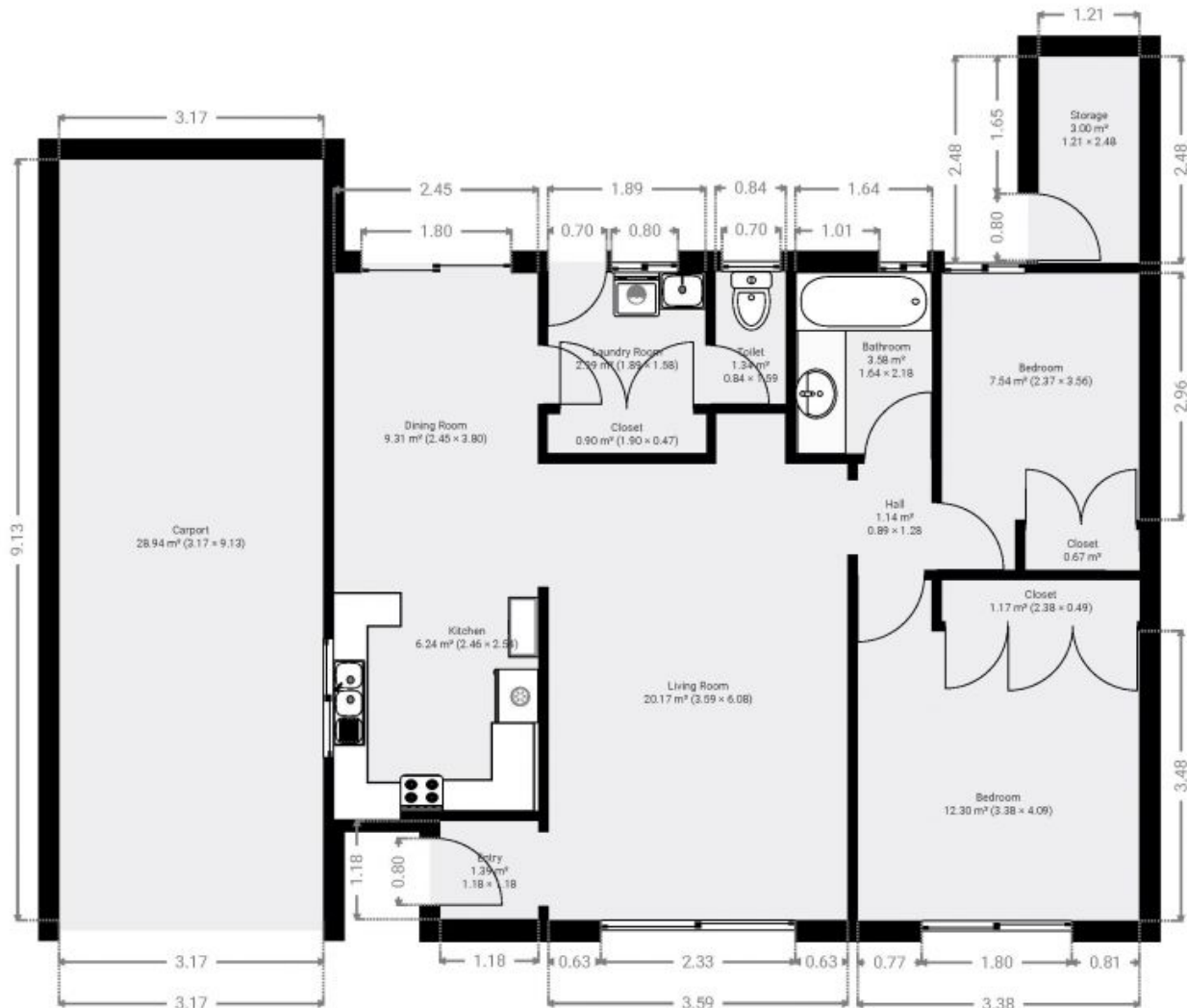


1/38 Strickland St, 6151 South Perth, WA, Australia
 TOTAL AREA: 100.61 m² • LIVING AREA: 71.67 m² • FLOORS: 1 • ROOMS: 15

SUBMITTED BY Braydon Ricetti
 info@bjrstudio.com.au

▼ Ground Floor

TOTAL AREA: 100.61 m² • LIVING AREA: 71.67 m² • ROOMS: 15



THIS FLOORPLAN IS PROVIDED WITHOUT WARRANTY OF ANY KIND. SENSOPIA DISCLAIMS ANY WARRANTY INCLUDING, WITHOUT LIMITATION, SATISFACTORY QUALITY OR ACCURACY OF DIMENSIONS.

1/38 Strickland Street

South Perth, WA



3m
 1:75
 je 1/1